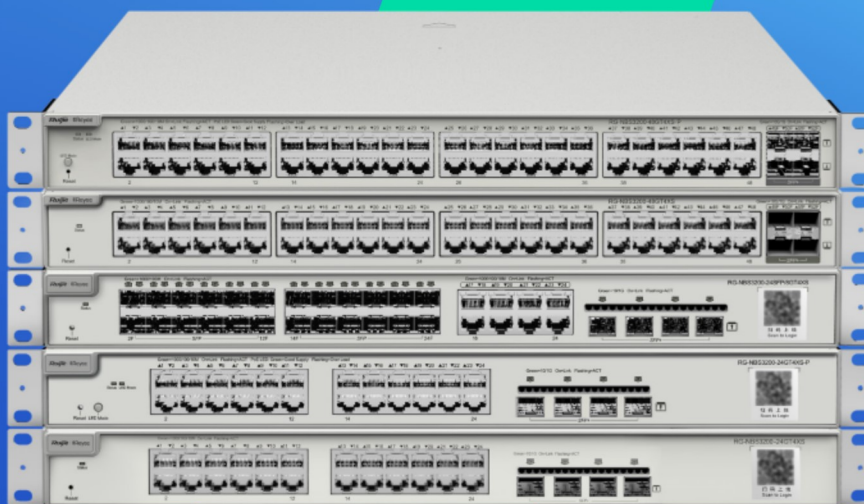


RG-NBS31/32 Series Layer 2 Cloud Managed Switches

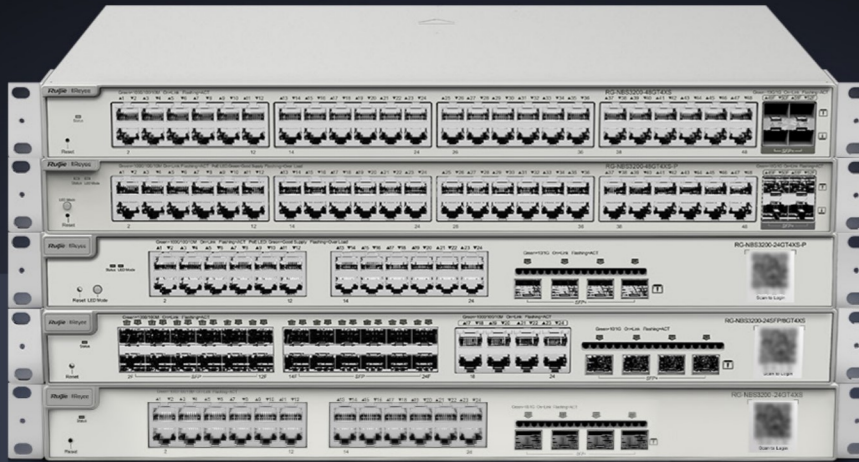
DATASHEET





Highlights


- Enterprise-class Quality Ensures High Performance
- Multiple Security Policies Protect Your Network
- Lifetime management on Ruijie Cloud at anytime anywhere

RG-NBS3000 Series Layer 2 Switch



 PoE Budget
370W

 Max. 30W
on Each Port

 Surge Protection
6KV

 5 Years
Warranty

Abundant PoE Application Scenarios



Enterprise-class Quality Ensures High Performance

Link Aggregation IGMP Snooping VLAN



Enterprise-class Quality Ensures High Performance

Link Aggregation IGMP Snooping VLAN

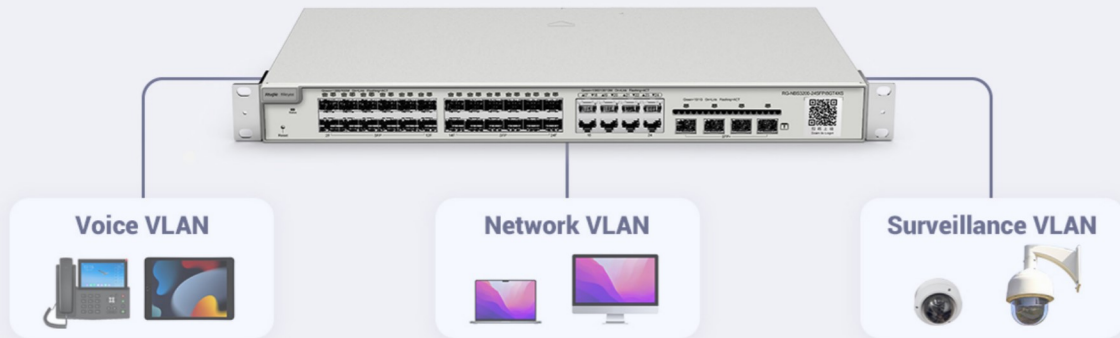


Enterprise-class Quality Ensures High Performance

Link Aggregation

IGMP Snooping

VLAN



Multiple Security Policies Protect Your Network

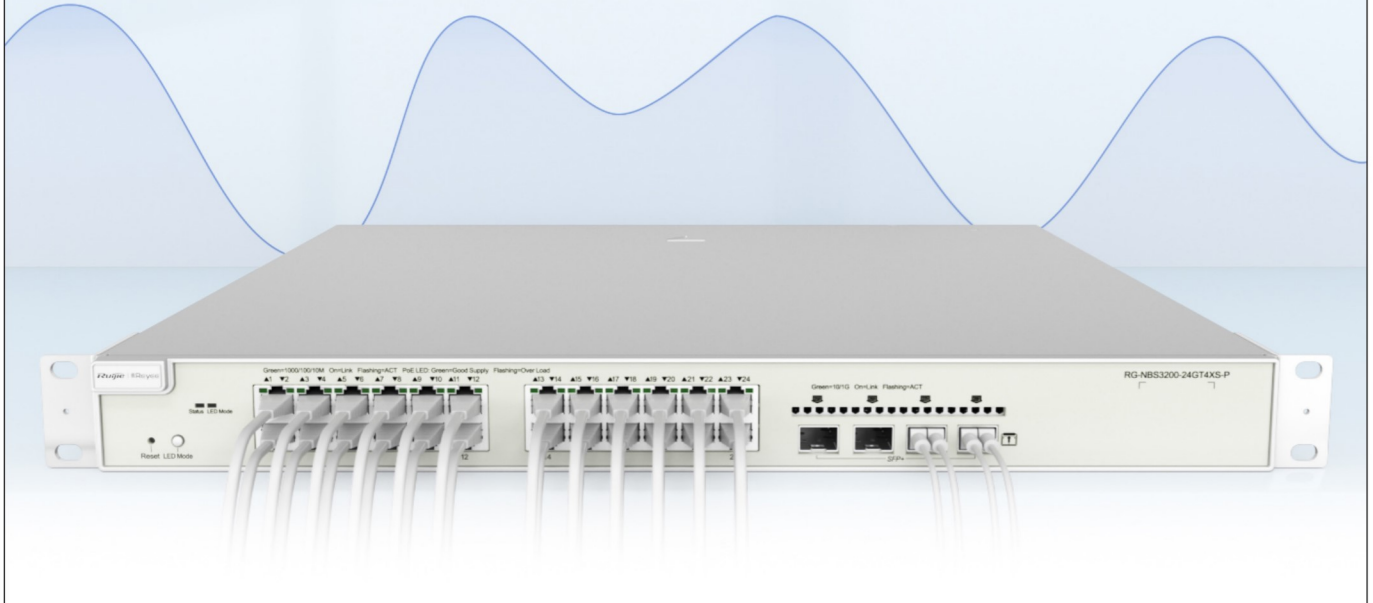
Security

Stability



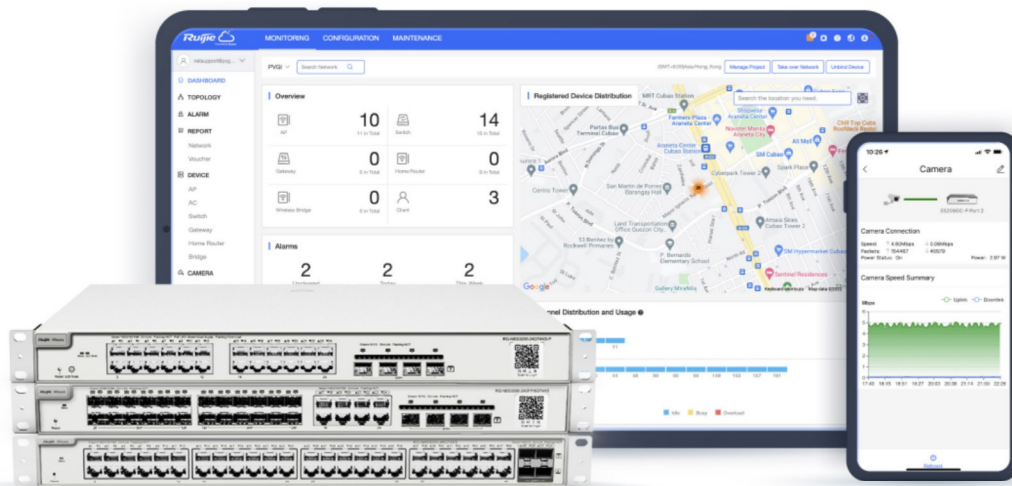
Multiple Security Policies Protect Your Network

Security Stability



Cloud, Make Your Business Easy

- SON, zero touch provisioning to Cloud
- Monitor switch statistics at anytime anywhere
- Configure VLANs on Ruijie Cloud APP
- Easy maintenance, save onsite time and cost



Basic

Model	RG-NBS3100-8GT2SFP	RG-NBS3100-8GT2SFP-P	RG-NBS3100-24GT4SFP	RG-NBS3100-24GT4SFP-P
10/100/1000Base-T ports	8	8	24	24
SFP ports	2	2	4	4
SFP+ ports	-	-		
PoE/PoE+ ports	-	8	FALES	24
Max. PoE budget	-	125W	-	370W
Layer Type	Layer 2	Layer 2	Layer 2	Layer 2
Switching capacity	20 Gbps	20 Gbps	56 Gbps	56 Gbps
Forwarding rate	14.88 Mpps	14.88 Mpps	41.67 Mpps	41.67 Mpps
Packet Buffer	4.1 Mbit	4.1 Mbit	4.1 Mbit	4.1 Mbit
MAC address table	16,000	16,000	16,000	16,000
Maximum VLAN Support	4094	4094	4094	4094
Dimensions (W x D x H)	260 mm x 120 mm x 43.6 mm	330 mmx 220 mm x 43.6 mm	440 mmx 165 mm x 44 mm	440 mmx 293 mm x 44 mm
Weight (With package)	1.2 kg	2 kg	2.4 kg	4.5 kg
MTBF	> 200,000	> 200,000	> 200,000	> 200,000
Warranty	5 Years	5 Years	5 Years	5 Years

Layer 2 Features

Jumbo Frame	9216	9216	9216	9216
Flow Control	✓	✓	✓	✓
STP (IEEE 802.1d)	✓	✓	✓	✓
RSTP (IEEE 802.1w)	✓	✓	✓	✓
MSTP (IEEE 802.1s)	-	-	-	-
Port Fast	✓	✓	✓	✓
BPDU Guard	✓	✓	✓	✓

Layer 2 Features

Model	RG-NBS3100-8GT2SFP	RG-NBS3100-8GT2SFP-P	RG-NBS3100-24GT4SFP	RG-NBS3100-24GT4SFP-P
Errdisable Recovery	✓	✓	✓	✓
Max. Aggregation Group	8	8	8	8
Max. Member per Group	8	8	8	8
Unknow Unicast Storm Suppression	✓	✓	✓	✓
Multicast / Broadcast Storm Suppression	✓	✓	✓	✓
Many-to-One Mirroring	✓	✓	✓	✓
VLAN Range	1-4094	1-4094	1-4094	1-4094
Port-based VLAN	✓	✓	✓	✓
MAC-based VLAN	✓	✓	✓	✓
IP-based VLAN	✓	✓	✓	✓
Voice VLAN	✓	✓	✓	✓
RLDP	✓	✓	✓	✓
LLDP / LLDP-MED	✓	✓	✓	✓
Cable Testing	✓	✓	✓	✓
IGMP Snooping v1/v2/v3	✓	✓	✓	✓

Software Features

Ping	✓	✓	✓	✓
Traceroute	✓	✓	✓	✓
ACL Entries	1200	1200	1200	1200
IP Standard ACL	✓	✓	✓	✓
MAC-based Extended ACL	✓	✓	✓	✓