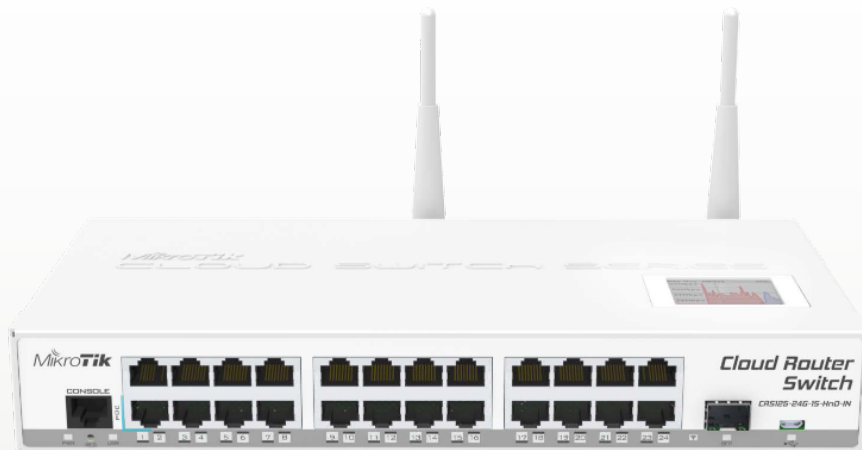


# Cloud Router Switch CRS125

-24G-1S-2HnD-IN

Perfect SOHO gateway router, switch, 11n AP all in one box

- Ethernet, Fiber, or 4G (with optional USB modem) gateway connection to Internet
- RouterOS gateway/firewall/VPN router
- up to twenty-five gigabit switch ports (1xSFP and 24xRJ45)
- High power 2.4GHz 11n wireless AP
- Frequency range: 2412-2484MHz.



Cloud Router Switch is our new Smart Switch series. It is a fully functional Layer 3 switch, and is powered by the familiar RouterOS.

All the specific Switch configuration options are available in a special Switch menu, but if you want, ports can be removed from the switch configuration, and used for routing purposes.

What's more - this device has a built in 2.4GHz wireless access point, this means you can have an AP, a router with any number of ports, and a full wire speed smart switch, all in one device - ideal for medium/small businesses and offices. It has 24 Gigabit ports, one SFP cage, a microUSB port and a built in Wireless AP.

- Fully manageable L3 switch, full wire speed switching
- Wireless AP built in
- Configure ports as switch, or for routing
- If required, full RouterOS power right there

CPU	Qualcomm Atheros AR9344 600 MHz
Memory	128MB
Ethernet	24x 10/100/1000 Mbit/s Gigabit Ethernet with Auto-MDI/X
Expansion	microUSB port
Storage	128MB Onboard NAND with multiple OS partition support
Serial port	One RJ45 serial port
Extras	Reset switch; beeper; voltage and temperature monitoring, touchscreen LCD
Power options	8-28V, 24V 1.2A PSU included
Case dimensions	285 x 167 x 44 mm
Temperature	-35C to +65C tested
OS	MikroTik RouterOS v6, Level 5 license
Included	CRS switch, power adapter, and USB OTG cable (for 4G dongle or USB drive)

Antennas	2x built in 4dBi swivel antennas
RX sensitivity	802.11g: -96dBm @ 6Mbit/s to -80dBm @ 54Mbit/s 802.11n: -96dBm @ MCS0 to -78dBm @ MCS7
TX power	802.11g: 20dBm @ 6Mbps to 20dBm @ 54 Mbps 802.11n: 20dBm @ MCS0 to 20dBm @ MCS7
Modulations	OFDM: BPSK, QPSK, 16 QAM, 64QAM DSSS: DBPSK, DQPSK, CCK